

Battery Operated Smoke Alarms

Kidde Fyrnetics battery operated smoke alarms require no wiring and include all batteries necessary for operation. Suitable for installation on walls or ceilings.



0914E Ionization Smoke Alarm

- ◆ Ionization Sensor
- ◆ For Use In All Rooms
- ◆ Low Battery Indicator
- ◆ Test Button



0914ET Ionization Smoke Alarm

- ◆ 0914 Twin Pack
- ◆ Ionization Sensor
- ◆ For Use In All Rooms
- ◆ Low Battery Indicator
- ◆ Test Button



0915E Ionization Smoke Alarm

- ◆ Ionization Sensor
- ◆ For Use In All Rooms
- ◆ Low Battery Indicator
- ◆ Test Button



0916E Ionization Smoke Alarm

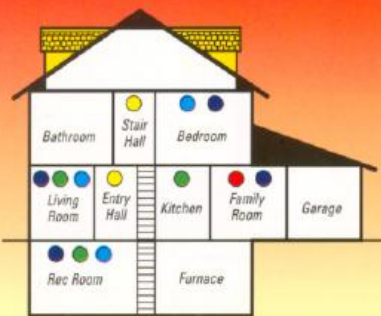
- ◆ Ionization Sensor
- ◆ Hush® Button and Hush Cancel
- ◆ Low Battery Indicator
- ◆ For Kitchens and Hallways Near Bathrooms
- ◆ Test Button



0916LLE Ionization Smoke Alarm

- ◆ Ionization Sensor
- ◆ Hush® Button and Hush® Cancel
- ◆ Long Life Lithium Battery
- ◆ Low Battery Indicator
- ◆ Test Button

Recommended Placements: Battery Operated Smoke Alarms



- 0914E/0915E
 - 0916E
 - 0916LLE
 - 0918E
 - PE9E
- Note:** Refer to owners manual for proper installation information!

Features	0914E	0915E	0916E	0916LLE
9V Battery Powered (Batteries Included)	●	●	●	●
Hush® Button			●	●
Exit Light				
Test Button	●	●	●	●
Flashing Red LED Power On Indicator	●	●	●	●
Low Battery Indicator	●	●	●	●
Piercing 85dB Alarm Horn	●	●	●	●
Ionization Sensor	●	●	●	●
Photoelectric Sensor				
Tamper Proof Locking Pin		●	●	●
5-Year Limited Warranty		●	●	●
10-Year Limited Warranty				●

